

FROM House TO HOME[®]

FEBRUARY
MARCH
2008

Historic Influences TO BUILD ON

Fairhope Home Utilizes The Past

Shower
POWER

AWAKEN YOUR SENSES

DEEP BLUE

Sleep

SHADES OF CALM

Flavor Remix

CREATIVE QUICHES

OLD Design, NEW Sensibility

This new home gives the appearance of a historic French Colonial home

TEXT DAYNA DEL VAL

IMAGES LOU FREEMAN



Ⓣ An antique terra-cotta French urn acts as a fountain in the pool.



Dick and Anita Bounds built a home in 1980 that they loved. They built more homes in the ensuing years, but in 2001, they went back to their architect, L. Craig Roberts, AIA, and began the process of building almost the same house again. Roberts says, "It's a very old-fashioned, country French house. Houses were built on two sections beside each other with covered porches in between on the front and back." Located on the east shore of Mobile Bay, this stunning 5,000-square-foot home was completed in 2006 and is the perfect culmination of tradition and the homeowners' personal style.

A small, winding road leads to the Bounds home. The house is set off the lane, and driving up, the gorgeous front porch is welcoming. Grand mahogany doors lead into the impressive hallway, which runs the entire length of the home and would have been a dog trot in original houses of this style. Horizontal boards line the walls, and 12-foot ceilings add height to the length. The Boundses have collected amazing antiques over the years, and a large walnut Plantation secretary graces the hallway.

Closely following the layout of the French Colonial period, the living spaces run the length of one side of the home, and the bedrooms are on the other. Along

Ⓚ The columns and roofline reflect the French Colonial period.

Ⓛ The seamless pool lit up at night has an almost mythological appearance.

Ⓧ Even the hallway radiates warmth and comfort.





The color palette for virtually the entire home was centered around an amazing collection of blue and white Chinese Export porcelain....





the back is the kitchen and family room, which Roberts designed to look like a converted back porch.

Like Roberts, David Erhardt, from David Erhardt and Associates, has worked with the homeowners previously and designed the interior of this home. He says, "The concept the Boundses wanted was for the house to feel period and as if it were not a home that was newly built. The best compliment we have been getting is, 'When did you renovate this home?'"

In addition to the historic architectural design, much of the interior reflects the French Colonial period. The kitchen displays an exposed brick wall consisting of 200-year-old Mobile bricks. The exposed cedar beams came from a Mississippi warehouse that was being torn down; they are so old, they have turned the color of heart pine. The floorboards, some as large as 18 inches wide, are also nearly 150 years old.

The color palette for virtually the entire home was centered around an amazing collection of blue and white Chinese Export porcelain from the 18th century and a rare camel hair rug in the living room. Incredible artwork, tapestries, and antique furnishings grace every room of the home. However, Erhardt says he felt it was important that the house not become too staged. So, the living room has an eclectic cast-acrylic tea table, and on the other side of the room, a tufted ottoman serves as a coffee table. Erhardt says, "It keeps the room loose feeling. It makes you feel like you can put your feet up a little bit." Situated within wood and enamel paneled walls, silk canvas draperies, and Clar-



Ⓢ The guest bedroom is accented by an antique Queen Anne chest and custom-made carpet.

Ⓢ Ⓢ The large piece of art over the fireplace actually hides a flat-screen TV.

Ⓢ The free-standing bathtub has a screen behind it for privacy.

Ⓢ The master bedroom is a formal sanctuary, complete with stately fabrics and furnishings.

ence House Brocade chairs, the combination of elegant formality and whimsical usability makes this house extremely comfortable.

The master suite is also done in pale blue, cream, and taupe. The walls are hand-dragged to look like linen. A powder room functions as a night bathroom for the master bedroom with upholstery that matches. In the master bathroom, Erhardt added a screen for privacy behind the free-standing bathtub. This bathroom is also accessible to the pool area.

The kitchen exhibits a Creole flair typical of the era portrayed. Cream cabinets with a baked-on taupe glaze pair beautifully with the exposed brick and mustard-hued walls, and the moss green, beaded ceiling. The island is a custom-made Creole design, and an iron lantern hangs over it to complete the room. The modern

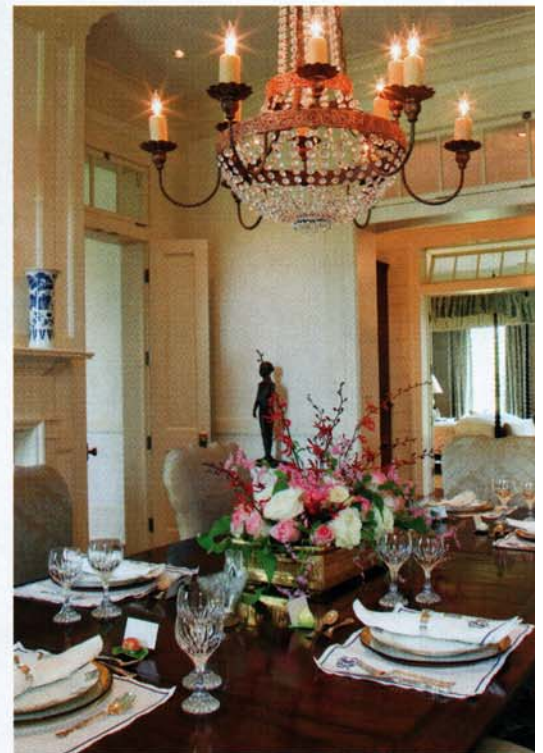
kitchen sitting area has overstuffed, red furniture and a flat-screen TV behind the bi-fold artwork.

Roberts says, "The Boundses are true patrons of the arts when it comes to architecture and interior design. My intent with this house, and I think what they wanted, too, was to design a house that would appear to have been the original old house on the hill." Borrowing heavily from another era, this house is a stunning example of old design and new sensibility. ■

In addition to the historic architectural design, much of the interior reflects the French Colonial period.



See additional photos at www.fromhousetohome.com/articles/old_design_new_sensibility



⌚ State-of-the-art appliances increase the functionality of this Creole-inspired kitchen.

⌚⌚ These Oriental lamps are among the Boundses' favorite pieces.

⌚ Some of Anita's Chinese Export collection is displayed in the dining room.